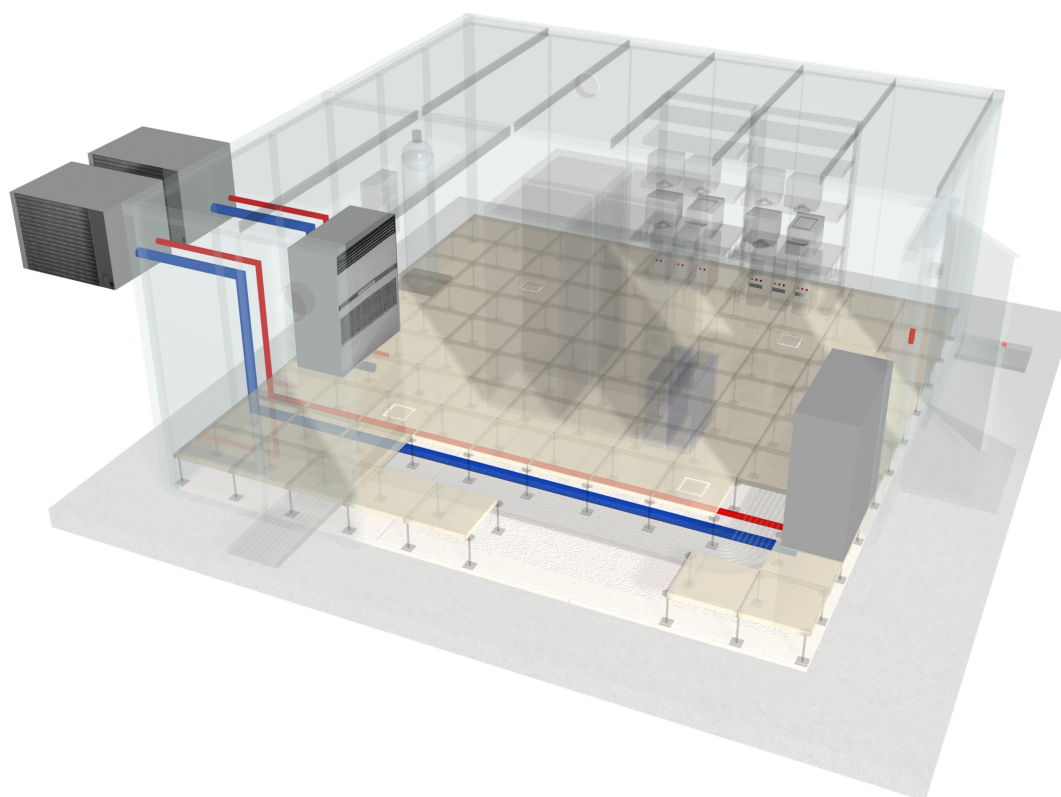


KLIMASYSTEME

für IT Sicherheitszellen und Serverräume.



Physikalische Sicherheitslösungen
für EDV Hardware.
IT Sicherheitszellen / Serverräume

BRODINGER

Daniel Etter-Strasse 2
A - 5303 Thalgau
Telefon: +43 (0) 6235/20 354
Fax : +43 (0) 6235/20 355
e-Mail : info@brodinger.at

www.brodinger.at

Raumluftklimasysteme

Ein ausfallsicheres, geregeltes Raumklima

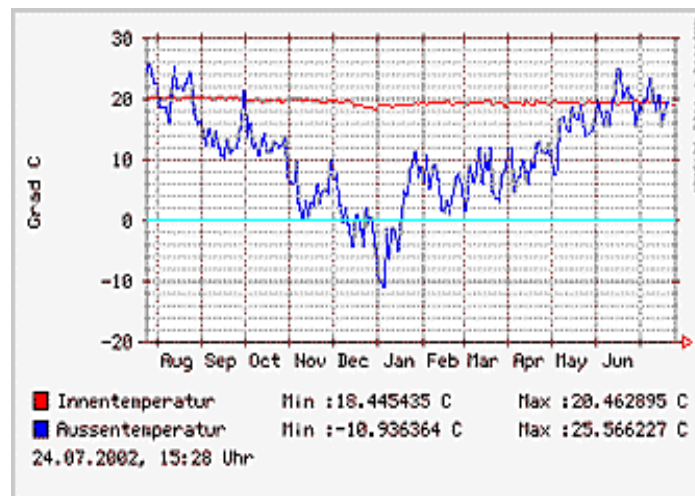
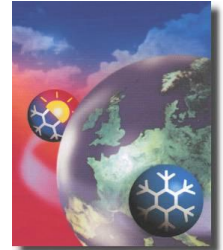
ist in EDV Räumen eines der wichtigsten Dinge.

Überhitzung von Hardware wie Prozessoren und Netzgeräte bringen oft Systemfehler die meist lange wo anders gesucht werden.

Festplattenschäden entstehen oft durch eine Übertemperatur im Betrieb.

Wir dimensionieren Ihnen Ihre Klimaanlage, wählen **das richtige System**, installieren dies und kontrollieren den laufenden Betrieb.

Wir bringen Das nötige wissen mit, das notwendig ist, um ein Klimasystem für eine EDV Anlage zu konzipieren.

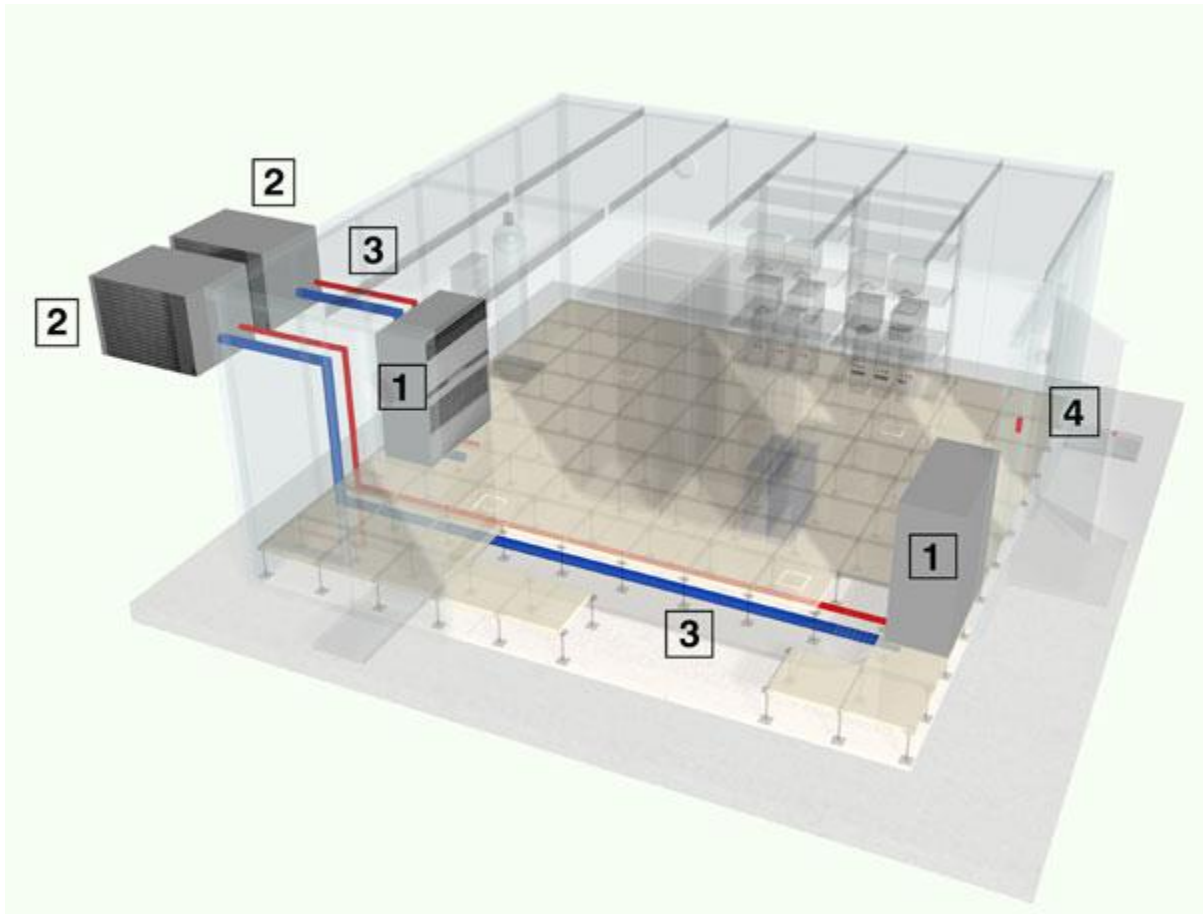


JAHRESWERTE

URSACHEN FÜR SYSTEMSCHÄDEN !

- ABSTÜRZE DURCH ÜBERTEMPERATUR
CPU KERNTemperatur (MAX. 90°C LAUT AMD)
d.h.: 70°C AN DER CPU OBERFLÄCHE
- FESTPLATTENSCHÄDEN
ÜBER 60°C IM DAUERBETRIEB IST DIE FESTPLATTE KAPUTT
ca. 45°C BEI NORMALER RAUMTEMPERATUR
- NETZTEILE
GARANTIRTER BETRIEB BIS 50°C

DIE LÖSUNGEN IM DETAIL !



1. Inneneinheit
2. Außeneinheit
3. Rohrleitungen
4. Steuerzentrale

Lieferumfang:

- Komplette Klimaanlage für IT Sicherheitszelle.
- konzipiert als Multisplitanlage mit Innen- und Außeneinheiten.
- 3,4kW bis 55kW Kühlleistung einfach oder redundant.
- Steuereinheit mit Klimaschema für den Einsatz bei redundanten Anlagen.
- Innengerät ausgeführt als Wandgerät oder Kompaktklimaanlage.
- Außengerät Kompressoreinheit montiert auf Außenwand oder Dachfläche.
- Fernbedienung oder Kontrolleinheit am Kompaktklimaschrank
- Rohrleitungsnetz für Kältemittel bis 45m.
- Kondenspumpe falls kein natürliches Gefälle vorhanden ist.
- Potentialfreie Kontakte für die Ansteuerung von z.B.: Alarm Systeme
- Ausblasen des Rohrnetzes gem. Richtlinien.
- Detailplanung.
- Montage und Spesen Montageteam.
- Funktionsprobe, Inbetriebnahme und Übergabe der Anlage.

Performance, aesthetics and comfort are all advantages that characterise the FLORIDA N wall-mounted unit range. With its refined design, tried and tested technology and reliable components, the Florida wall-mounted range can also offer unrivalled heat comfort and air quality, which means that it can be incorporated into all residential and tertiary sector environments. With extremely low noise levels, a broad operating range, the eco-friendly fluid **R410A** and energy label A (depending on model), the **FLORIDA N** wall-mounted unit range has been designed to provide a very high comfort level and to be very easy to fit for installers.



The **FLORIDA N** wall-mounted split unit range is available with the ecologically friendly fluid R410A. This provides high energy efficiency, while preserving the ozone layer, and is easily recyclable. Its high density and high energy efficiency make for high performance coefficients, thereby providing significant energy savings.

Night-time slow running

This function limits the system's energy consumption, adapting the temperature for perfect rest conditions for the user and limited energy consumption in both hot mode and cold mode.

This programmable function provides savings of around 7 % per degree, which makes for significant gains on the electricity bill.

The filters

Other than automatic air sweeping that adopts the best blowing angle for the mode selected, this range has an exceptional air treatment quality (ensured by 3 filtration levels) to provide optimum comfort to the occupants.

❖ **Standard filters or pre-filters:** eliminate the largest particles (dust or other impurities). They are regenerative (wash with soapy water), and an indicator light shows the cleaning times.

❖ **Activated carbon filter:** specially designed to neutralise odour-bearing particles (tobacco, kitchen smells, animal smells, etc.), this photo-catalytic type filter needs to be placed in the light every 6 months to restore its optimum efficiency.

❖ **Active electrostatic filter:** this absorbs particles such as dust, pollen, mites, bacteria and tobacco smoke, thereby ensuring an impeccable air quality.

Standard filter




Activated carbon filter



Active electrostatic filter



Energy		Air conditioner
Manufacturer		Airwell
Outdoor unit		GC 7 NRC R410
Indoor unit		ST FLO 7 NRC
Economic		A
A		
B		
C		
D		
E		
F		
G		
Uneconomic		
Annual energy consumption, kWh in cooling mode		
<small>(the actual consumption depends on how the device is used and on the climate)</small>		
Cooling capacity kW		2.23
Energy efficiency level at full load (must be as high as possible)		3.23
Type		
Cooling only		
Cooling and heating		←
Air cooling		←
Water cooling		
Heating capacity kW		
Energy performance in heating mode		
<small>A: economic G: uneconomic</small>		
Noise dB(A)		25
A detailed information sheet is included in the brochure		
<small>Standard EN Air conditioner "Energy labelling" directive 2002/31/EC</small>		

FLORIDA N Indoor units



FLO 7/9/12/14 N



FLO 18/24 N



FLO 30 N



❖ EVAPORATOR

The double bend evaporator provides a greater exchange surface area, which increases its effectiveness and efficiency, while also reducing the size.

❖ LCD SCREEN

Simple and user-friendly, this electro-luminescent display lets you view the following simultaneously: the various modes, the temperature setting, the ventilation speed.



❖ TURBINE

The aerodynamically designed tangential turbine, with a diameter greater than the conventional model, enhances the exchange process and reduces the noise level.



Outdoor units

The heat-stable polyester material structure provides a reduction in the noise level, weight and a prolonged service life. The anticorrosion treatment with a High density powder paint coating ensures high resistance whatever the operating conditions.

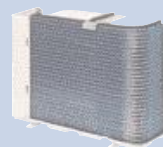


GCNG 7/9/12/14 RC



❖ COMPRESSOR

A rotary compressor providing optimum performance and noise levels.



❖ CONDENSER

"Bluefin" hydrophilic treatment promotes the flow of condensates, while also providing corrosion protection to maintain performance levels and prolonging the service life.



❖ PROPELLER

With 3 aerodynamic blades, the propeller offers better balance, enhances the exchange process and makes silent operation possible.

The FLORIDA N wall mounted range: the aesthetics of performance!

Infrared remote control

Small-size and with excellent ergonomic properties, the AIRWELL infrared remote control is highly user friendly. It can be used to program advanced multiple functions such as choosing between 3 ventilation speeds, night-time slow running, programming, dehumidification, the energy saving function and "I feel" function, and many others. One press of a button is all it takes for the desired temperature to be obtained and controlled with a high degree of precision.



WALL MOUNTED RANGE



FLO N Cooling Only and Heat Pump Series

		FLO 7 N FLO 7 N RC	FLO 9 N FLO 9 N RC	FLO 12 N FLO 12 N RC	FLO 14 N FLO 14 N RC	FLO 18 N FLO 18 N RC	FLO 24 N FLO 24 N RC	FLO 30 N FLO 30 N RC
Heating capacity⁽¹⁾	kW	2.28	3	4	4.48	5.56	7.37	9.09
Power input	kW	0.66	0.85	1.14	1.39	1.6	2.4	3.06
COP / Energy label		3.45 / B	3.52 / B	3.51 / B	3.22 / C	3.46 / B	3.07 / D	2.97 / D
Cooling capacity⁽²⁾	kW	2.23	2.72	3.63	4	5.5	6.81	8.8
Power input	kW	0.68	0.82	1.1	1.33	1.69	2.26	3.01
EER / Energy label		3.23 / A	3.31 / A	3.30 / A	3.03 / B	3.22 / A	3.01 / B	2.92 / C

INDOOR UNITS

Dehumidification	l/h	0.7	0.9	1.3	1.5	1.8	2.66	3.2
Airflow (LS/NS/HS)	m ³ /h	280/320/380	330/380/450	450/550/635	475/550/660	750/840/930	840/930/990	830/1040/1250
Acoustic pressure to 1m (LS/HS) ⁽³⁾	dB(A)	25/27/30	28/31/35	35/39/43	36/41/46	37/40/43	40/42/45	47/51/55
Net Weight	kg	11	11	11.5	11.5	14	15	17
Dimensions (WidthxDepthxHeight)	mm	810x190x285	810x190x285	810x190x285	810x190x285	1060X210X295	1060X210X295	1200x236x340

OUTDOOR UNITS

		GC 7 N GC 7 NRC	GC 9 N GC 9 NRC	GC 12 N GC 12 NRC	GC 14 N GC 14 NRC	GC 18 N GC 18 NRC	GC 24 N GC 24 NRC	GC 30 N GC 30 NRC
Compressor type		Rotary	Rotary	Rotary	Rotary	Rotary	Rotary	Scroll
Operating limits Winter/Summer ⁽⁴⁾		- 10 °C / + 43 °C						
Airflow	m ³ /h	1 660	1 780	1 850	2 160	2 480	2 480	3 110
Acoustic pressure to 1 m	dB(A)	47	49	53	54	57	58	60
Weight	kg	32	35	35	38	56	56	82
Dimensions (WxDxH)	mm	795x290x610	795x290x610	795x290x610	795x290x610	846x302x690	846x302x690	900x340x970

LINKING SPECIFICATIONS BETWEEN INDOOR AND OUTDOOR UNITS

1-230V Power supply

		Indoor	Indoor	Indoor	Indoor	Ind. or Out.	Ind. or Out.	Outdoor
Power supply side								
Power cable section	mm ²	3x1.5	3x1.5	3x1.5	3x1.5	3x1.5	3x2.5	3x2.5
Fuse am	A	10	10	15	15	15	20	32
Electrical connections Ind./Out.	mm ²	5x1.5	5x1.5	5x1.5	5x1.5	6x1.5	6x1.5	6x1.5

3N-400V Power supply

Power supply side		-	-	-	-	Outdoor	Outdoor	Outdoor
Power cable section	mm ²	-	-	-	-	5x1.5	5x1.5	5x1.5
Fuse am	A	-	-	-	-	-	6	6
Electrical connection Ind./Out.	mm ²	-	-	-	-	6x1.5	6x1.5	6x1.5

Linking pipes

Max. length	m	15	15	15	15	25	25	25
Max. height	m	7	7	7	7	15	15	15
Suction pipe Diameter	Inchs	3/8"	3/8"	3/8"	1/2"	1/2"	3/8"	3/8"
Liquid pipe Diameter	Inchs	1/4"	1/4"	1/4"	1/4"	1/4"	5/8"	5/8"

(1) Nominal heating capacity: international conditions 20°C/12°C damp - External air: 7°C/6°C damp. (2) Nominal cooling capacity: international conditions (Standards NF EN 255.2 / 814.2) - 27°C/19°C damp - External air: 35°C/24°C damp. (3) Overall acoustic pressure in dB(A) (1 m) under nominal conditions: outdoor unit in a free field over a reflecting plane - indoor unit: installed in an average sized room, (PV-0.5s reverberation). (4) Operating limit with all-seasons kit.

Airwell



ACE MARKETING - I bis, av. du 8 mai 1945 - Saint-Quentin-en-Yvelines
 F - 78284 Guyancourt Cedex
 Fax : +33 (0) 1 39 44 65 17 - Tél. : +33 (0) 1 39 44 78 00
www.airwell.com

your approved *Airwell* distributor

Physikalische Sicherheitslösungen
 für EDV Hardware.
 IT Sicherheitszellen / Serverräume

BRODINGER

Daniel Etter-Strasse 2
 A - 5303 Thalgau
 Telefon: +43 (0) 6235/20 354
 Fax : +43 (0) 6235/20 355
 e-Mail : info@brodinger.at

www.brodinger.at

EIN ANSPRECHPARTNER !

EINE LÖSUNG !

EIN SICHERHEITSKONZEPT !

Physikalische Sicherheitslösungen
für EDV Hardware.
IT Sicherheitszellen / Serverräume

BRODINGER

Daniel Etter-Strasse 2
A - 5303 Thalgau
Telefon: +43 (0) 6235/20 354
Fax : +43 (0) 6235/20 355
e-Mail : info@brodinger.at

www.brodinger.at